



INTERNAL AFFAIRS YEAR END SUMMARY

Santa Monica Police Department

Report Date: December 8, 2017

Personnel Complaints

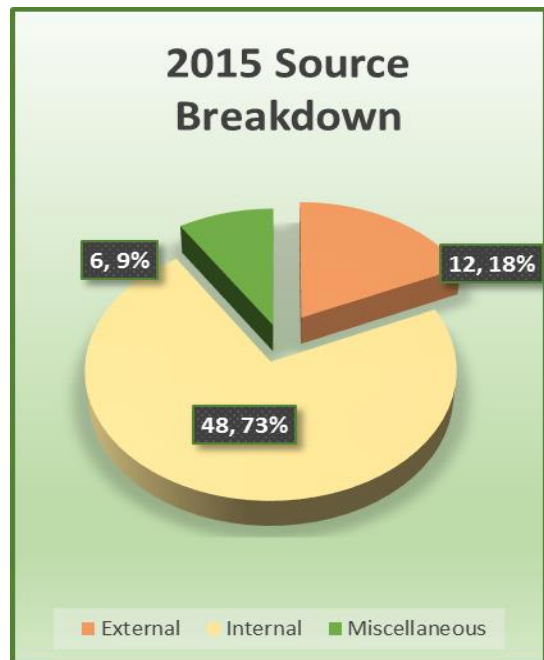
2015 Report Year†

The Internal Affairs Unit divides personnel complaints into two main categories based on the source of the complaint. Complaints reported by community members are labeled External Complaints, while acts of misconduct observed or reported within the Department to SMPD supervisors are labeled as Internal Complaints. When a supervisor or citizen reports allegations of personnel misconduct that do not rise to the level of any policy violation, the complaint or complaints are categorized as Miscellaneous Complaints.

Complaints Received in 2015			Sworn		Non-Sworn		Total Employees	
External	12	20.0%§	10	-10.0%	4	-100.0%	14	-35.7%
Internal	48	10.4%	36	52.8%	16	-62.5%	52	17.3%
Total	60	11.7%	46	39.1%	20	-70.0%	66	6.1%
Miscellaneous	6							

To thoroughly investigate all complaints, Internal Affairs administrative cases may require up to a year to complete an investigation. Due to this lengthy process, statistical reporting will cover only calendar years in which all investigations received in that reporting period have been closed by the Internal Affairs Unit. This report will compare the most recent completed investigations for 2015 year as well as any extended trends and comparisons where possible. An example is the table above shows the percentage change in the 2015 report year to 2014 year.

In 2015, the Internal Affairs Unit received 12 External Complaints and 48 Internal Complaints for a total of 60 Personnel complaints. The Internal Affairs also received 6 Miscellaneous Reports, two were internal and four were external sources of perceived employee misconduct that failed to reach the level of a policy violation. The 60 combined Personnel Complaints involved 69 subject employees and required IA to conduct 274 interviews of member of the public, witness employees, and the subject employees.



The pie chart provides a visual comparison of the three sources of investigations received by the Internal Affairs Unit for the 2015 report year.

† Report period is January 1 to December 31

§ Percentages reflect the change from the previous report year

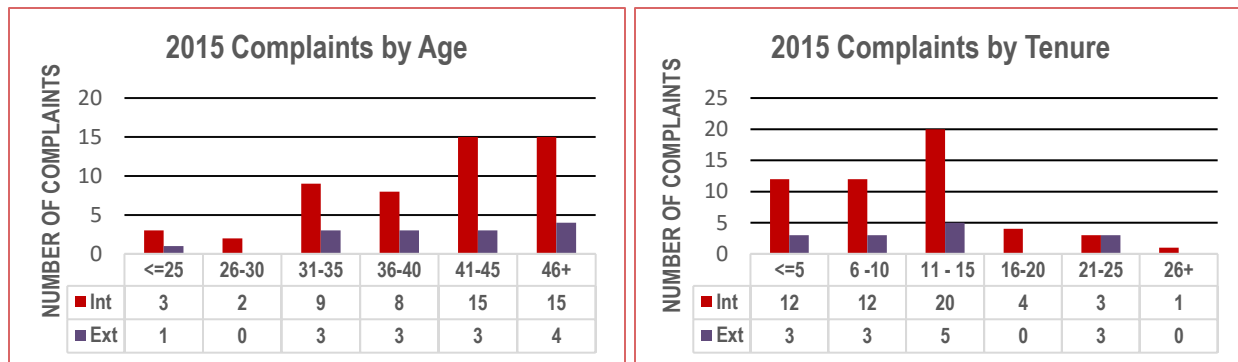


INTERNAL AFFAIRS YEAR END SUMMARY

Santa Monica Police Department

Report Date: December 8, 2017

The graphs below provide a breakdown by age and by tenure of the 69 employees involved in Internal and External Complaints. In the chart on the left the comparison of age to the number of Personnel and External Complaints shows the age of the older employee to be a factor. While the chart on the right shows the tenure to complaints comparison to effect the newer employees.



The Internal Affairs Unit receives a wide range of allegations in the complaints reported, as shown in the IA Investigation Details in the following pages. For statistical reporting purposes, the Internal Affairs Unit has categorized these complaints into five types of allegations:

- Neglect** When an employee fails to complete acts or responsibilities that are within the normal scope of the employee's job duties.
- Cubo** When an employee acts in a behavior deemed inappropriate for the employee's position and the Department. (Conduct unbecoming an officer)
- UOF** When it is alleged an employee used excessive force.
- TA** When an employee was involved and believed to be responsible for a preventable traffic collision. (Traffic Accident)
- Policy** When an employee has committed a policy violation that does not meet the above categories.

ALLEGATION	INTERNAL	%(INT)	%(TOTAL)	EXTERNAL	%(EXT)	%(TOTAL)
NEGLECT	7	12.28%	9.72%	0	0.00%	0.00%
CUBO	4	7.02%	5.56%	4	26.67%	5.56%
UOF	0	0.00%	0.00%	3	20.00%	4.17%
TA	30	52.63%	41.67%	0	0.00%	0.00%
POLICY	16	28.07%	22.22%	8	53.33%	11.11%
	57		73.20%	15		26.80%

† Report period is January 1 to December 31

§ Percentages reflect the change from the previous report year



INTERNAL AFFAIRS YEAR END SUMMARY

Santa Monica Police Department

Report Date: December 8, 2017

Corrective Action

Section 1020.7 of the Santa Monica Police Department Policy Manual classifies allegation dispositions into four outcomes of unfounded, exonerated, not sustained, and sustained. These dispositions are defined as:

Unfounded When the investigation discloses that the alleged act(s) did not occur or did not involve Department personnel.

Exonerated When the investigation discloses that the alleged act occurred, but that the act was justified, lawful and/or proper.

Not-Sustained When the investigation discloses that there is insufficient evidence to sustain the complaint or fully exonerate the employee.

Sustained When the investigation discloses sufficient evidence to establish that the act occurred and that it constituted misconduct.

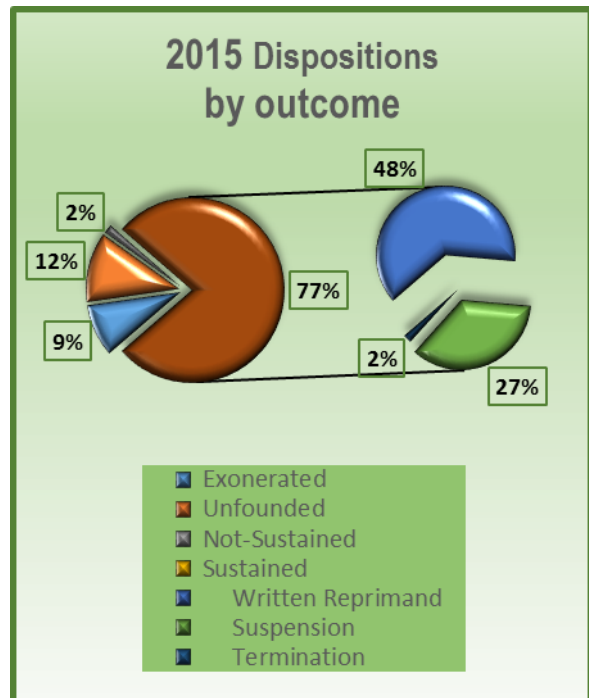
Investigation Outcomes

In 2015, the 66 employees involved in the 60 Internal Affairs investigations had final dispositions as:

- 6 Exonerated
- 8 Unfounded
- 1 Not-Sustained
- 51 Sustained

Of the four types of dispositions, only Sustained outcomes include some form of discipline. The 51 sustained dispositions had imposed corrective action consisting of:

- 32 Written Reprimands
- 18 Suspensions for total of 678 hours
- 1 Termination



† Report period is January 1 to December 31

§ Percentages reflect the change from the previous report year



INTERNAL AFFAIRS YEAR END SUMMARY

Santa Monica Police Department

Report Date: December 8, 2017

The table below shows more detail as to the type (source of the complaint), number of employees involved, the allegation of misconduct identified, the policies ultimately violated or not violated based on the outcome of each case and the disposition and outcome after the Internal Affairs investigation. IA cases with multiple employees, will list multiple outcomes only if outcomes were not the same for each involved employee.

2015 Investigation Details

Case Status	Emp	Allegation	Policy	Narrative	Dispo	Outcome
Internal	1	Policy	340.3.5(c) Performance 340.3.5(ab) Performance	Unauthorized booking of an arrestee	Sustained Sustained	20 hours
Internal	1	TA	340.3.6(e) Safety	Preventable collision	Sustained	Written Reprimand
Internal	1	TA	340.3.6(e) Safety	Preventable collision	Sustained	Written Reprimand
Internal	1	TA	340.3.6(e) Safety	Preventable collision	Sustained	Written Reprimand
Internal	1	TA	340.3.6(e) Safety	Preventable collision	Sustained	Written Reprimand
Internal	1	TA	340.3.6(e) Safety	Preventable collision	Sustained	Written Reprimand
Internal	1	Policy	340.3.5(c) Conduct 502.4.4 Traffic Collisions on Roadways	Pattern of poor work performance	Sustained Sustained	20 hours
Internal	1	Policy	340.3.6(a) Safety 340.3.6(f) Safety 312-04-000 C Patrol Rifle Inspection 312-04-000 D Patrol Rifle Inspection	Negligent discharge of a firearm.	Sustained Sustained Sustained Sustained	10 hours
Citizen	1	Policy	304.3.2 (k) Conduct 304.3.3(a) Discrimination	Racially insensitive.	Unfounded Unfounded	n/a
Internal	2	Cubo	340.3.5(aa) Performance	Unprofessional conduct	Sustained	Written Reprimand
			340.3.5(aa) Performance		Sustained	Written Reprimand

† Report period is January 1 to December 31

§ Percentages reflect the change from the previous report year



INTERNAL AFFAIRS YEAR END SUMMARY

Santa Monica Police Department

Report Date: December 8, 2017

Case Status	Emp	Allegation	Policy	Narrative	Dispo	Outcome
Citizen	1	Policy	340.3.5(u) 340.3.5(e) Performance	Unauthorized arrest and destruction of property	Exonerated, Unfounded	n/a
Internal	1	Policy	304.3.6 (a)(f) Safety	Negligent discharge of a Taser	Sustained	Written Reprimand
Internal	1	TA	340.3.6(e) Safety	Preventable collision	Sustained	Written Reprimand
Internal	1	TA	340.3.6 (e) Safety	Preventable collision	Sustained	Written Reprimand
Internal	1	TA	340.3.6(e) Safety	Preventable collision	Sustained	Written Reprimand
Internal	1	TA	340.3.6(e) Safety	Preventable collision	Sustained	Written Reprimand
Internal	1	Policy	340.3.6(a) Safety 340.3.6 (f) Safety 312-03-001 A Shotgun Inspection 312-03-001 B Shotgun Inspection 312-03-001 D Shotgun Inspection	Negligent discharge of a firearm.	Sustained Sustained Sustained Sustained	10
Internal	1	Policy Neglect	340.3.5(b) Performance 340.3.5(c) Performance	Failure to perform duties required of an officer.	Exonerated Sustained	Written Reprimand
Citizen	1	Policy	324.3(b) Temporary Custody	Failure to follow procedures in the detention of a minor.	Sustained	Written Reprimand
Citizen	1	Policy Conduct	340.3.6(e) Safety 340.3.2(k) Conduct	Safe operation of a vehicle, conduct	Unfounded Unfounded	n/a
Internal	1	Neglect	340.3.2(k) Conduct 340.3.5(c) Performance	Neglect of duty, rude and unprofessional	Not-Sustained Sustained	Written Reprimand
Internal	1	TA	340.3.6 (e) Safety	Preventable collision	Sustained	Written Reprimand
Internal	1	Policy	312.3(d) Authorized off-duty firearm	Failure to secure duty weapon	Sustained	40 hours

† Report period is January 1 to December 31

§ Percentages reflect the change from the previous report year



INTERNAL AFFAIRS YEAR END SUMMARY

Santa Monica Police Department

Report Date: December 8, 2017

Case Status	Emp	Allegation	Policy	Narrative	Dispo	Outcome
Citizen	2	Cubo, Policy	340.3.5(aa) Performance	Conduct unbecoming and failure to supervise	Unfounded	n/a
			340.3.8(a) Supervision Responsibility		Unfounded	
			340.3.5(aa) Performance		Unfounded	
Internal	2	Policy	900-00-021 Jail Searches	Failed to search arrestee	Exonerated	n/a
			900-00-021 Jail Searches		Exonerated	
Citizen	1	Policy	340.3.5(f) Performance	Wrongful exercise of authority	Unfounded	n/a
Internal	1	Neglect, Cubo	340.3.2(k) Conduct	Neglect of duties and responsibilities	Sustained	80 hours
			340.3.5(c) Performance		Sustained	
Citizen	1	UOF	340.3.2(a) Conduct	Excessive use of force	Unfounded	n/a
Internal	1	TA	340.3.6(e) Safety	Preventable collision	Sustained	Written Reprimand
Internal	1	TA	340.3.6(e) Safety	Preventable collision	Sustained	Written Reprimand
Internal	1	TA	340.3.6(e) Safety	Preventable collision	Sustained	Written Reprimand
Internal	1	TA	340.3.6(e) Safety	Preventable collision	Sustained	20 hours
Internal	1	TA	340.3.6(e) Safety	Preventable collision	Sustained	Written Reprimand
Internal	1	TA	340.3.6(e) Safety	Preventable collision	Sustained	Written Reprimand
Citizen	1	UOF	300.2 Use of force policy	Unreasonable use of force	Exonerated	n/a
Internal	1	Policy	340.3.5(c) Performance	Preventable collision, failed to report incident	Sustained	80 hours
			502.4 Reporting Situations,		Sustained	

† Report period is January 1 to December 31

§ Percentages reflect the change from the previous report year



INTERNAL AFFAIRS YEAR END SUMMARY

Santa Monica Police Department

Report Date: December 8, 2017

Case Status	Emp	Allegation	Policy	Narrative	Dispo	Outcome
Internal	1	TA	340.3.6(e) Safety	Preventable collision	Sustained	10 hours
Internal	1	TA	340.3.6(e) Safety	Preventable collision	Sustained	Written Reprimand
Internal	1	TA	340.3.6(e) Safety	Preventable collision	Sustained	Written Reprimand
Internal	1	TA	340.3.5(aa) Performance 340.3.2(a) Conduct	Performance, conduct	Sustained Sustained	40 hours
Citizen	1	Cubo, Policy	340.3.5(aa)	Performance, language	Not-Sustained	n/a
Citizen	1	UOF	300.2 Use of force policy	Excessive use of force	Exonerated	n/a
Internal	1	Policy, Conduct, Neglect	340.3.5(c) Performance 330.3 Child Abuse Reporting 344.2.1 (a) Criminal Activity Reporting 344.3 General Policy of Expeditious Rpt. 804.1 Purpose and Scope 340.3.2 (k) Conduct	Failure to complete an investigation book evidence, complete a report, conduct	Sustained Sustained Sustained Sustained Sustained Sustained	Termination
Internal	1	TA	340.3.6(e) Safety	Preventable collision	Sustained	Written Reprimand
Internal	1	TA	340.3.6(e) Safety	Preventable collision	Sustained	Written Reprimand
Internal	1	TA	340.3.6(e) Safety	Preventable collision	Sustained	10 hours
Internal	1	TA	340.3.6(e) Safety	Preventable collision	Sustained	Written Reprimand
Internal	1	TA	340.3.6(e) Safety 340.3.6(c) Safety	Preventable collision	Sustained Sustained	10 hours
Internal	1	TA	340.3.6(e) Safety	Preventable collision	Sustained	Written Reprimand
Citizen	1	Cubo	340.3.2(k) Conduct	Unprofessional language	Not-sustained	n/a

† Report period is January 1 to December 31

§ Percentages reflect the change from the previous report year



INTERNAL AFFAIRS YEAR END SUMMARY

Santa Monica Police Department

Report Date: December 8, 2017

Case Status	Emp	Allegation	Policy	Narrative	Dispo	Outcome
Internal	1	Policy	340.4.6 (a) Safety 340.3.6 (f) Safety	Negligent discharge of a firearm.	Sustained	40 hours
Internal	1	Policy	304.3.5(aa) Performance 304.3.5(ad) Performance	Failed to accurately document information on a crime report.	Unfounded Unfounded	n/a
Internal	3	Policy Neglect	900-09-000 Arrestee using prescript med 900-09-001 Med which may not be furnished 900-00-020(A) Non-Detainable Prisoners 900-02-000 Supervision of Prisoners 340.3.5 (c) Performance 340.3.5 (ab) Performance	Failure to provide medical attention to a prisoner.	Sustained Sustained Sustained Unfounded Sustained Sustained	24 hours
			900-09-000 Arrestee using prescript med 900-09-001 Med which may not be furnished 900-00-020(A) Non-Detainable Prisoners 900-02-000 Supervision of Prisoners 340.3.5 (c) Performance 340.3.5 (ab) Performance		Sustained Sustained Sustained Unfounded Sustained Sustained	12 hours
			900-09-000 Arrestee using prescript med 900-09-001 Med which may not be furnished 900-00-020(A) Non-Detainable Prisoners 900-02-000 Supervision of Prisoners 340.3.5 (c) Performance 340.3.5 (ab) Performance		Sustained Sustained Sustained Unfounded Sustained Sustained	12 hours
Internal	1	TA	340.3.6(e) Safety	Preventable collision	Sustained	Written Reprimand
Internal	1	TA	340.3.6(e) Safety	Preventable collision	Sustained	Written Reprimand
Internal	1	TA	340.3.6(e) Safety	Preventable collision	Sustained	Written Reprimand
Internal	1	Cubo	340.3.2(g) Conduct 340.3.2(h) Conduct 340.3.5(e) Performance 340.3.5(f) Performance 340.3.5(o) Performance 340.3.5(aa) Performance 340.3.5(ad) Performance	Inappropriate and unprofessional conduct while off-duty.	Sustained Sustained Sustained Sustained Sustained Sustained Sustained	220 hours
Internal	1	TA	340.3.2(k) Conduct	Disrespectful and unprofessional conduct.	Sustained	10 hours

† Report period is January 1 to December 31

§ Percentages reflect the change from the previous report year



INTERNAL AFFAIRS YEAR END SUMMARY

Santa Monica Police Department

Report Date: December 8, 2017

Investigation Disposition Yearly Comparison

	2014	% change from previous year	2015	% change from previous year
Exonerated	4	-66.7%	6	33.3%
Unfounded	8	-27.3%	8	0.0%
Not-Sustained	4	-33.3%	1	-300.0%
Sustained	46	-41.8%	51	9.8%

Corrective Action Imposed Comparison

	2014	% change from previous year	2015	% change from previous year
Written Reprimand	35	-40.7%	32	-9.4%
Termination	0	0.0%	1	100.0%
Demotion	0	0.0%	0	0.0%
Suspension	11	-45.0%	18	38.9%
Total Suspension Hours	330	-55.7%	678	51.3%

† Report period is January 1 to December 31

§ Percentages reflect the change from the previous report year